

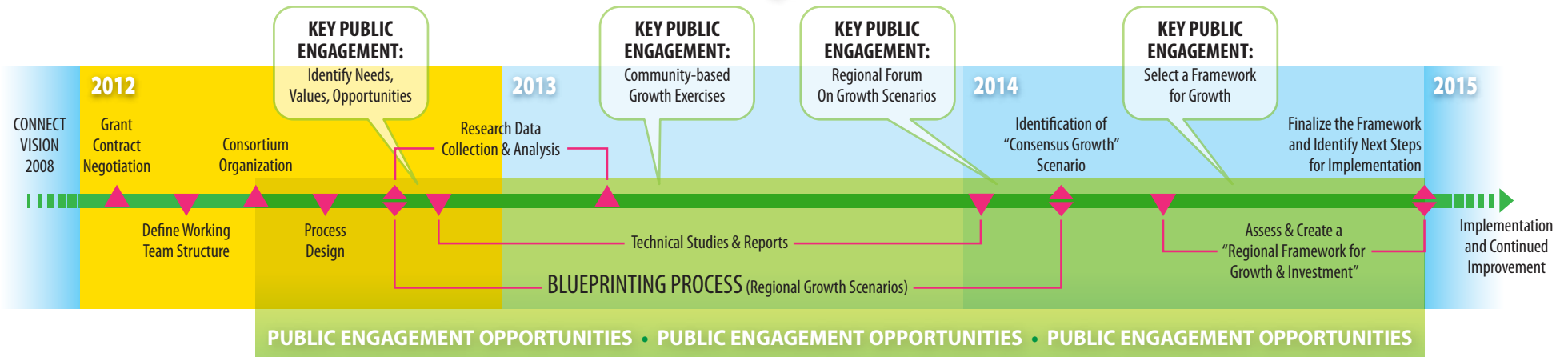
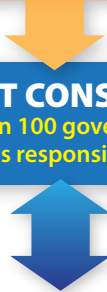


"CONNECT OUR FUTURE" PROCESS MAP

This process will create a regional growth framework developed through extensive community engagement, built on what communities identify as existing conditions, future plans and community values. This process builds capacity for problem solving and focuses on being inclusive and transparent.

PARTICIPATION, LEADERSHIP and CHAMPIONS
 Elected Officials, Regional Stakeholders and Residents: 14-County Region, North Carolina & South Carolina

CONNECT CONSORTIUM
 A broad-based group of more than 100 governments, businesses, non-profits, and educational institutions responsible for guiding the process.



Jobs/Economic Development **Land Use** **Transportation** **Housing** **Energy** **Public Health** **Natural Resources**

CONNECT work groups representing the seven program areas above will provide technical support and guidance to the process of developing a regional growth framework.

Vibrant Communities – Robust Region